

Week 47 Highlights

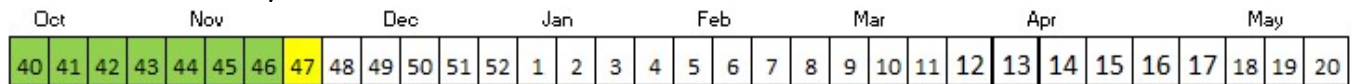
The weekly Influenza Watch summarizes the flu surveillance in the City of Cleveland. The metrics in this report include the number and percentage of emergency department visits for influenza-like illness, confirmed hospitalizations for the flu, and the deaths each week due to pneumonia and influenza.

- This week, flu activity is classified as “Low”
- 8.25% of the 206 deaths reported were due to pneumonia. No influenza deaths were reported this week, and there has been one influenza death so far this season.
- There were 8 confirmed cases of influenza-associated hospitalization reported this week.
- 2.37% of emergency department visits were for flu-like illness

Flu Intensity: Moderate



Seasonal Flu Intensity



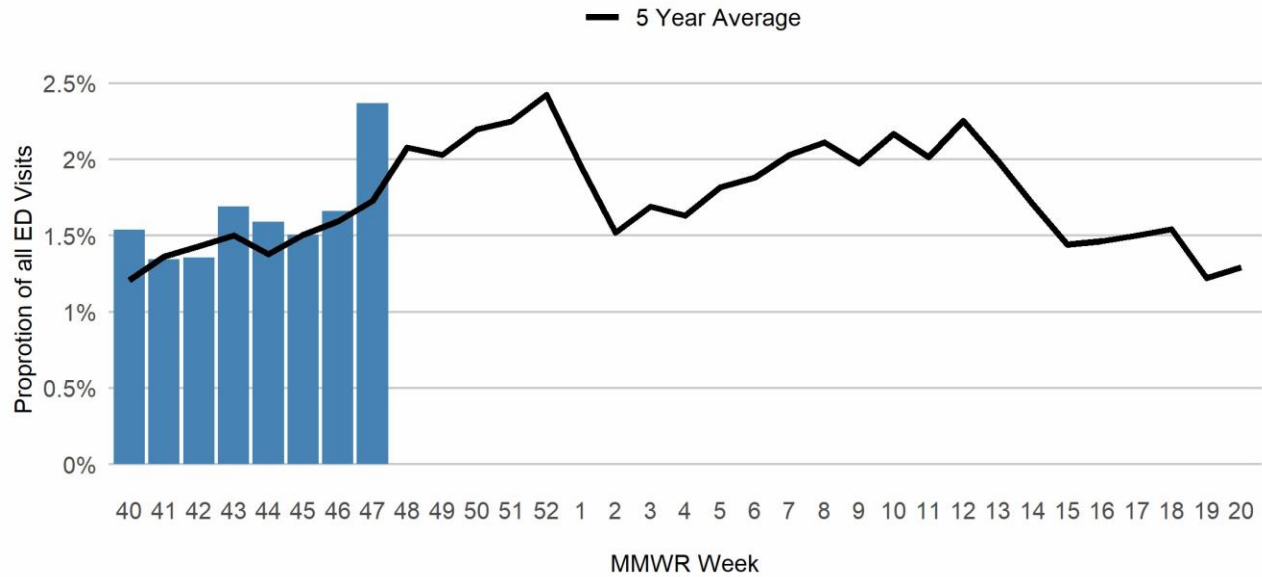
COVID-19 & Influenza (Flu) Intensity Indicators	This Week n (%)	Activity Compared to Last Week	Season Total n (%)
Emergency Department visits for Influenza-Like Illnesses	89 (2.37%)	+0.71%	521 (1.62%)
Confirmed Influenza Hospitalizations [‡]	8	+5	13
Confirmed COVID-19 Hospitalizations	5	-4	52
Pneumonia- & Influenza-Related Deaths	17 (8.25%)	+2.54%	106 (4.61%)

*Deaths represent all deaths for Cuyahoga County. All other data presented are City of Cleveland-specific. Data are preliminary and subject to change as more information is gained.

The three indicators for calculating the intensity thresholds are based [on 2017 methodology from the Centers for Disease Control and Prevention.](#)

Influenza-Like Illnesses

Influenza ED Visits 2023-2024 by Week



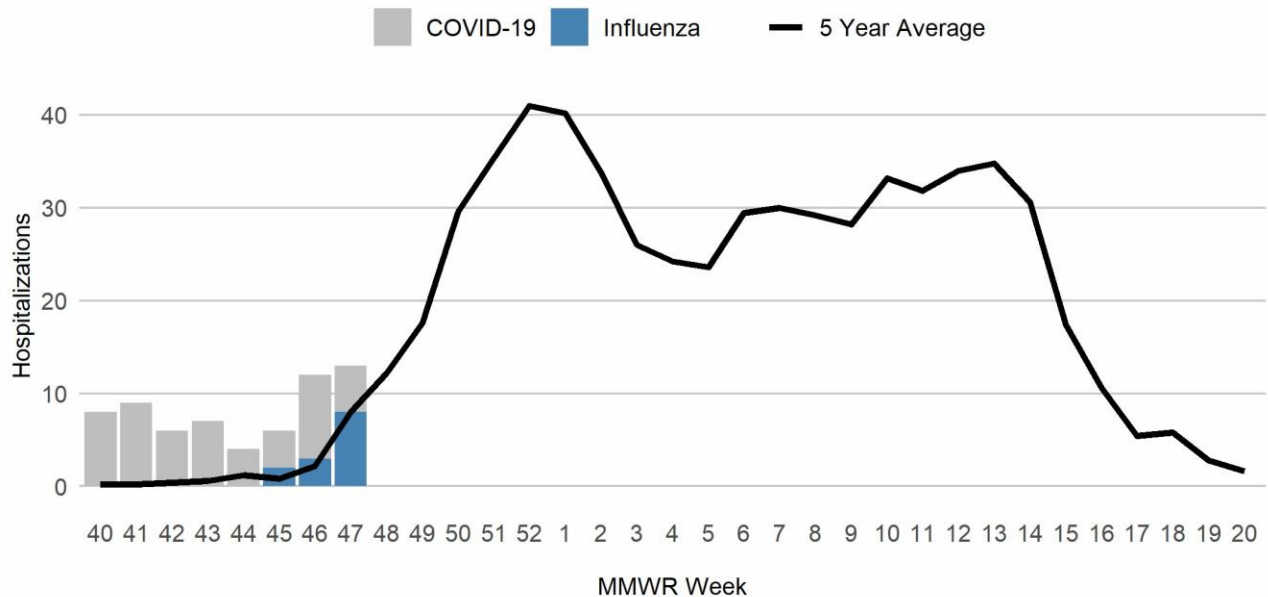
LOW < 1.88%	MODERATE 1.88% - 1.94%	HIGH 1.94% - 1.99%	VERY HIGH 1.99% <
-----------------------	----------------------------------	------------------------------	-----------------------------

The proportion of Emergency Room visits for influenza-like illnesses is above the very high threshold and higher than the 5-years average. This week, 53% of visits were among females. Regarding race and ethnicity, 34% of visits were Black or African American individuals; 26% were among White individuals; and 40% of visits were among other racial groups. About a quarter (30%) of visits were among Hispanic or Latin individuals. The median age this week is 4 years.

Data Source: Health Monitoring Systems: EpiCenter 3.5.18. Data extracted on 11/29/2023.
Low, Moderate, and High intensity thresholds are defined as the 50%, 90%, and 99% Confidence Intervals, respectively, based on the 5-Year Average of previous seasons

Influenza or COVID-19-Associated Hospitalizations

Influenza and COVID-19 Hospitalizations 2023-2024 by Week



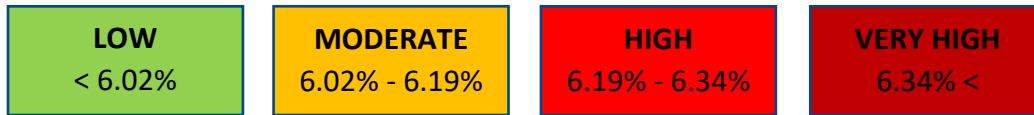
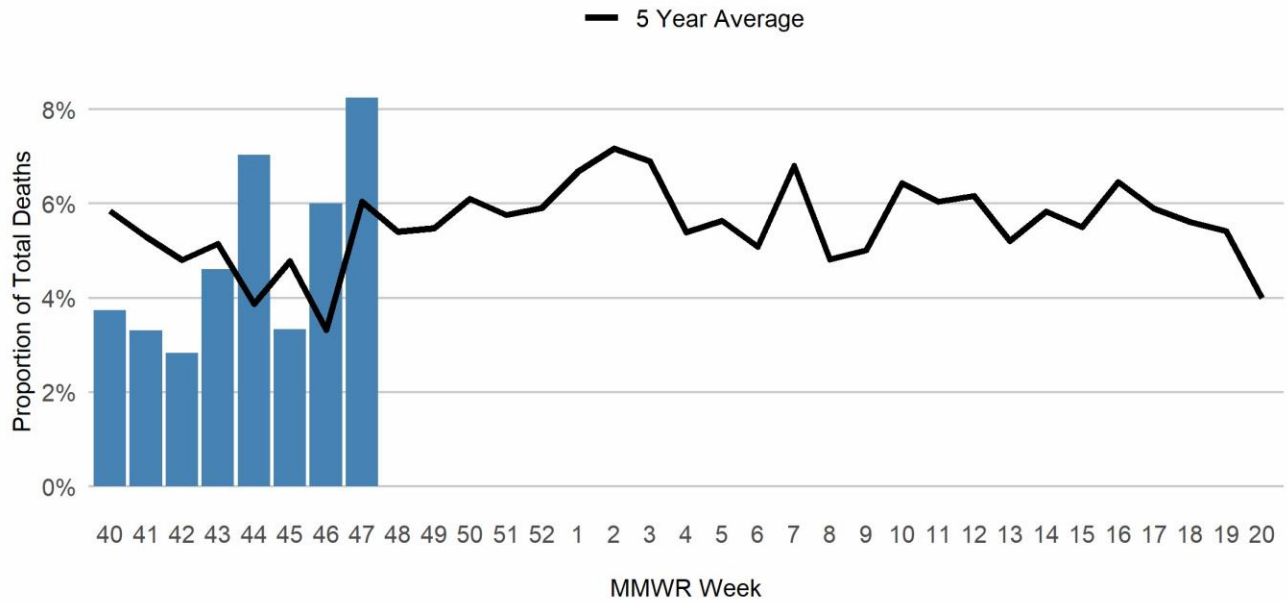
There have been 8 Influenza-Associated Hospitalizations (IAH) reported this week among individuals aged 62 to 88 years. This marks a notable increase from the previous week, bringing the total influenza-associated hospitalizations for the season to 13. COVID-19 has accounted for more hospitalizations so far this fall. COVID-19 hospitalizations have decreased this week compared to last week, with five reported during the current reporting week. These hospitalizations were among Cleveland residents aged 30 to 68 years.

Data Source: Ohio Department of Health: Ohio Disease Reporting System. Data extracted on 11/29/2023. Data are preliminary and subject to change as more information is gained.

Low, Moderate, and High intensity thresholds are defined as the 50%, 90%, and 99% Confidence Intervals, respectively, based on the 5-Year Average of previous seasons.

Pneumonia- & Influenza-Associated Deaths*

Influenza, COVID-19, and Pneumonia Deaths 2023-2024 by Week



There have been 17 deaths this reporting week due to pneumonia or influenza-related illnesses (P&I). The proportion of P&I deaths is above the high threshold this week. This week, the data shows there was not an influenza or COVID-19-related death. The majority P&I deaths that occurred this week were among individuals aged 45 years and older.

Data Source: Cleveland Department of Public Health Department of Vital Statistics. Data compiled on 11/29/2023. Data are preliminary and subject to change as more information is gained.

*Deaths represent all deaths for Cuyahoga County. All other data presented are City of Cleveland-specific.

Low, Moderate, and High intensity thresholds are defined as the 50%, 90%, and 99% Confidence Intervals, respectively, based on the 5-Year Average of previous seasons.